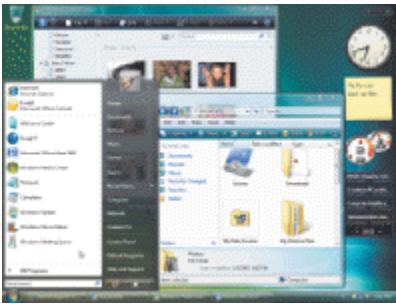




- b. Multiprogramming
  - d. Multitasking
- \_\_\_ 13. All programs and data located in RAM are divided into fixed-length \_\_\_ or variable-length segments, depending on the operating system being used.
- a. pies
  - b. sectors
  - c. pages
  - d. cylinders
- \_\_\_ 14. \_\_\_ memory allows you to use more memory than is physically available on your computer.
- a. Shared
  - b. Virtual
  - c. Multithreading
  - d. Buffer
- \_\_\_ 15. A \_\_\_ is an area in RAM or on the hard drive designated to hold input and output on their way in or out of the system.
- a. segment
  - b. buffer
  - c. page
  - d. sector



- \_\_\_ 16. With a \_\_\_\_, as shown in the accompanying figure, icons, buttons, menus, and other objects are selected with the mouse to issue commands to the PC.
- a. graphical user interface
  - b. command line interface
  - c. desktop
  - d. command-driven interface
- \_\_\_ 17. During the 1980s and early 1990s, \_\_\_ was the dominant operating system for microcomputers.
- a. Mac OS
  - b. DOS (Disk Operating System)
  - c. Linux
  - d. desktop operating system
- \_\_\_ 18. In DOS, the command \_\_\_ displays the files and folders in the current location.
- a. CD
  - b. FORMAT
  - c. DIR
  - d. COPY
- \_\_\_ 19. One of the most obvious initial changes in Windows Vista is the \_\_\_ interface.
- a. Leopard
  - b. Android
  - c. Aero
  - d. Symbian
- \_\_\_ 20. The most recent version of Windows is Windows \_\_\_.
- a. Leopard
  - b. XP
  - c. 7
  - d. Vista
- \_\_\_ 21. \_\_\_ is the proprietary operating system for computers made by Apple Corporation.
- a. Linux
  - b. Solaris
  - c. Mac OS
  - d. Unix
- \_\_\_ 22. \_\_\_ was originally developed in the late 1960s at AT&T Bell Laboratories as an operating system for midrange servers.
- a. Linux
  - b. UNIX
  - c. Solaris
  - d. Mac OS X
- \_\_\_ 23. In addition to personal operating systems and server operating systems, there are also mobile operating systems and \_\_\_.
- a. embedded operating systems
  - c. virtual operating systems

- b. high-performance operating systems      d. storage operating systems
- \_\_\_ 24. Commercial Linux distributions, such as those available from \_\_\_ and Novell, come with maintenance and support materials.
- a. Red Hat      c. Cisco  
b. .NET Framework      d. Adobe
- \_\_\_ 25. \_\_\_ is a family of operating systems based on Windows that is designed primarily for consumer and industrial devices that are not personal computers.
- a. Windows Vista      c. Windows Server 2003  
b. Windows Embedded      d. Windows Mobile
- \_\_\_ 26. \_\_\_ is a Linux-based operating system developed by the Open Handset Alliance.
- a. Android      c. Mac OS X  
b. UNIX      d. Vista
- \_\_\_ 27. \_\_\_ is the version of Windows designed for mobile phones.
- a. Windows Embedded      c. Windows Mobile  
b. Windows Vista      d. Windows Server 2003
- \_\_\_ 28. \_\_\_ is the most widely used mobile operating system worldwide.
- a. Mac OS      c. Windows Mobile  
b. Palm OS      d. Symbian OS
- \_\_\_ 29. The file management program incorporated into Windows is \_\_\_.
- a. StuffIt      c. Windows Explorer  
b. WinZip      d. Disk Cleanup
- \_\_\_ 30. To restore a file or folder deleted from your computer's hard drive, open your computer's \_\_\_ and restore the file to its original location.
- a. Recycle Bin      c. System Restore program  
b. Windows Explorer      d. Recycle Menu
- \_\_\_ 31. \_\_\_ are utility programs that search for documents and other files on a user's hard drives.
- a. Search tools      c. Search engines  
b. Tool boxes      d. Tool programs
- \_\_\_ 32. Rearranging the data on the hard drive so all files are stored in contiguous locations is called \_\_\_.
- a. disk defragmentation      c. disk backup  
b. file compression      d. disk cleanup
- \_\_\_ 33. Creating a(n) \_\_\_ means making a duplicate copy of important files so that when a problem occurs, you can restore those files using the backup copy.
- a. mirror      c. index  
b. backup      d. hidden file
- \_\_\_ 34. \_\_\_ can protect against someone accessing your PC via the Internet.
- a. Mirrors      c. Firewalls  
b. Antispam software      d. Modems
- \_\_\_ 35. A \_\_\_ is a software program that is designed to cause damage to the computer system or perform some other malicious act.
- a. firewall      c. spyware  
b. utility program      d. computer virus

### Case-Based Critical Thinking Questions

#### Case 5-1

Janet is studying operating systems as part of her Understanding Computers 101 class. After learning about the different types of operating systems, she realizes that she uses a number of them in her daily life.

- \_\_\_ 36. All the computers in Janet's school computer lab have the newest version of Windows installed, which is \_\_\_\_.
- a. Windows Vista
  - b. Windows Solaris
  - c. Windows XP
  - d. Windows 7
- \_\_\_ 37. Janet has an Apple computer at home. The operating system of that computer is \_\_\_\_.
- a. Windows Vista
  - b. Solaris
  - c. Windows Embedded
  - d. Mac OS

### Case-Based Critical Thinking Questions

#### Case 5-2

Dean has been using computers for some time now, but he is unfamiliar with a number of utility programs. In order to better maintain his computer, he decides to ask his coworker Andrea for advice on basic utility programs.

- \_\_\_ 38. Andrea tells Dean that he should periodically perform \_\_\_ on his computer to optimize the hard drive so that it works more efficiently. This process works by rearranging the data on the hard drive so all files are stored in contiguous locations.
- a. disk defragmentation
  - b. file compression
  - c. disk cleanup
  - d. backup
- \_\_\_ 39. Andrea advises Dean to remove unnecessary programs from his computer by using a(n) \_\_\_ utility.
- a. delete
  - b. uninstall
  - c. remove
  - d. cleanup
- \_\_\_ 40. Another thing that Andrea tells Dean is that it is very important for him to \_\_\_ all of his important data on a regular basis to protect against data loss in the case of a problem with the computer. He can use a(n) \_\_\_ utility to do this.
- a. cleanup
  - b. defragment
  - c. compress
  - d. backup